



Commercial Road, London, E14

BUTLER  STAG



Virtual Tour

Large 721 sq ft two bedroom apartment in the Mission Building. A grade II listed building formerly known as the Empire Memorial Sailors' Hostel. Water rates included in the rental price!



- Recently Redecorated
- One Bathroom
- Residents BBQ
- Close to Transport
- Two Bedrooms
- Communal Garden
- Gym Access
- Available 10th February

This recently redecorated apartment comprises of a fully integrated kitchen, open plan to a large reception area. Both bedrooms are almost identical in size and feature fitted wardrobe, perfect for sharers. There is also ample storage near the entrance and a modern, three piece bathroom.

The Mission Building is a secure development with phone-operated entry system, lift access, communal garden with a residents BBQ, a large roof terrace with panoramic views of London and cycle stores. There's also an internal small-scale gym that's exclusive to tenants and a porter working Monday to Friday.

Located within walking distance of Limehouse DLR station and just a short walk to the Limehouse Cut canal. Offering quick access to the City and Canary Wharf.

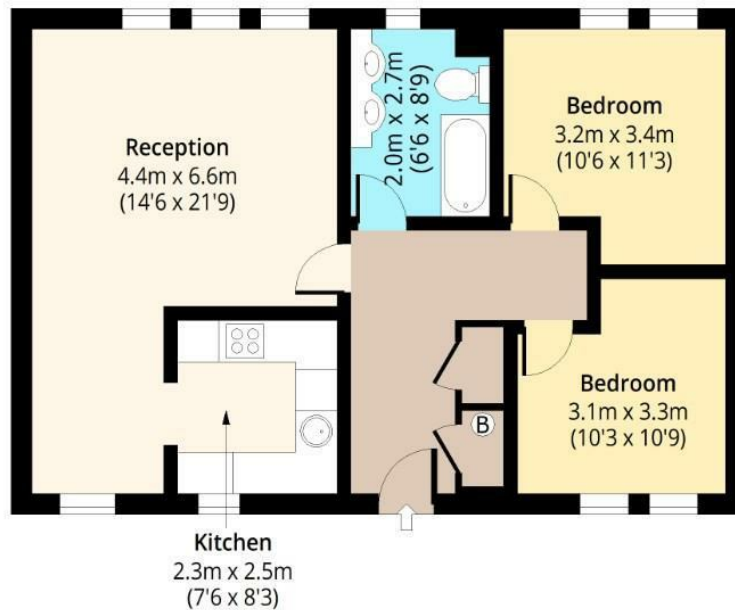




Mission Building, E14

Third Floor

Approx. 67.00 Sq. meters (721 Sq. feet)



Total area: approx. 67.00 Sq. meters (721 Sq. feet)
For illustration purposes only - not to scale
www.lpaplus.com

IMPORTANT NOTICE - These particulars have been prepared in good faith and they are not intended to constitute part of an offer or contract. We have not performed a structural survey on this property and the services, appliances and specific fittings have not been tested. All photographs, measurements, floor plans and distances referred to are given as a guide and should not be relied upon.

BUTLER & STAG

☎ 020 8102 1236

🏠 508 Roman Road, Bow, London, E3 5LU

✉ bow@butlerandstag.com

www.butlerandstag.uk